



THE UNSUSTAINABLE SPIRAL OF GROWTH

**Albert Tucker, Ph.D.
President, Board of Trustees**

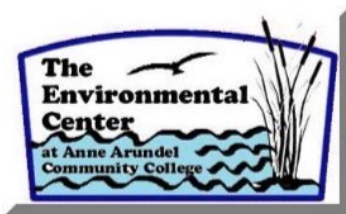
Phone: 240.339.3780 Email: Altucker@cepaonline.org

October 14, 2016

Chesapeake Environmental Protection Association 2016 Forum

Anne Arundel Community College

Co-sponsors



**MARYLAND LEAGUE
OF CONSERVATION VOTERS**

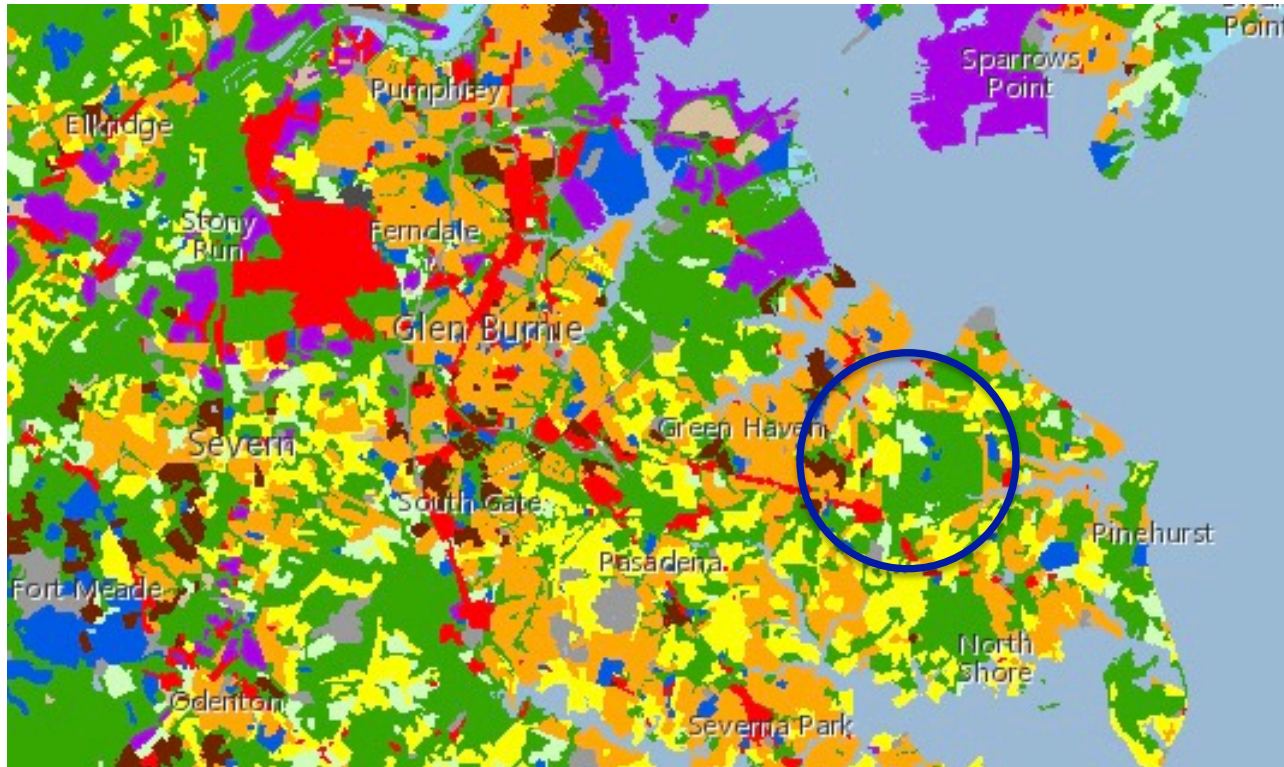


WHAT ARE THE UNSUSTAINABLE ISSUES OF GROWTH

- **Fiscal - the ability to pay for current infrastructure maintenance and its replacement**
- **Environmental/Social - the loss of ecosystem services caused by low-density land-use and the subsequent impact on “quality-of-life.”**
- **Political - the lack of political will to adequately address the above issues.**

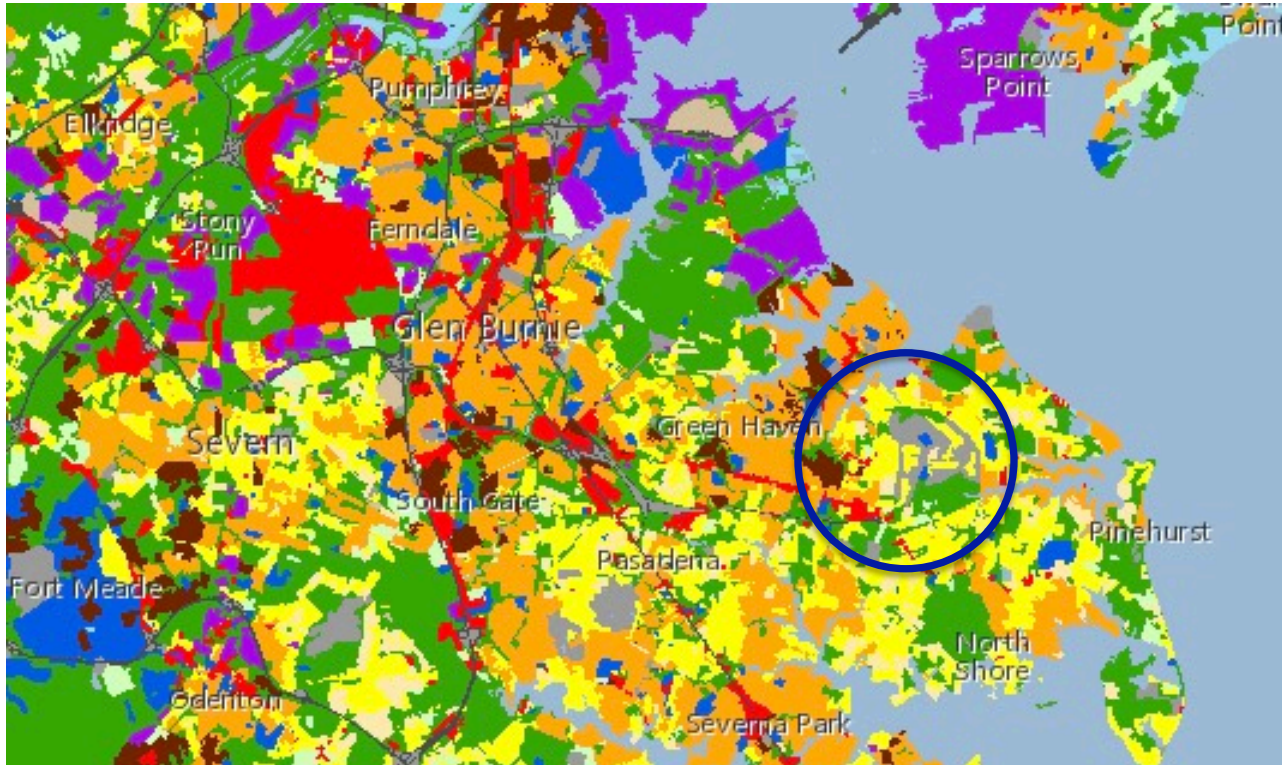


North County Land Use 2002



CHESAPEAKE ENVIRONMENTAL PROTECTION ASSOCIATION, INC.
P.O. Box 117, Galesville, Maryland 20765

North County Land Use 2010

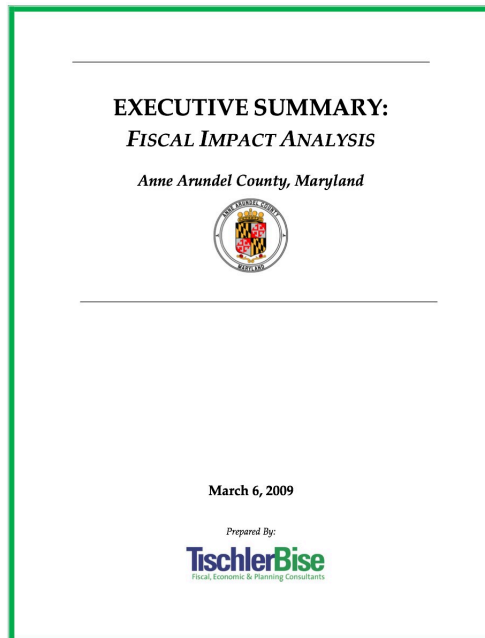


CHESAPEAKE ENVIRONMENTAL PROTECTION ASSOCIATION, INC.
P.O. Box 117, Galesville, Maryland 20765

CURRENT MAINTENANCE & REPAIR BACKLOG

\$2.1 billion is a good round number...

- BOE \$1.5 billion
- Community College \$200 million
- Libraries \$100 million
- County roads & facilities \$300 million



In 2009 GDP Supporting Document

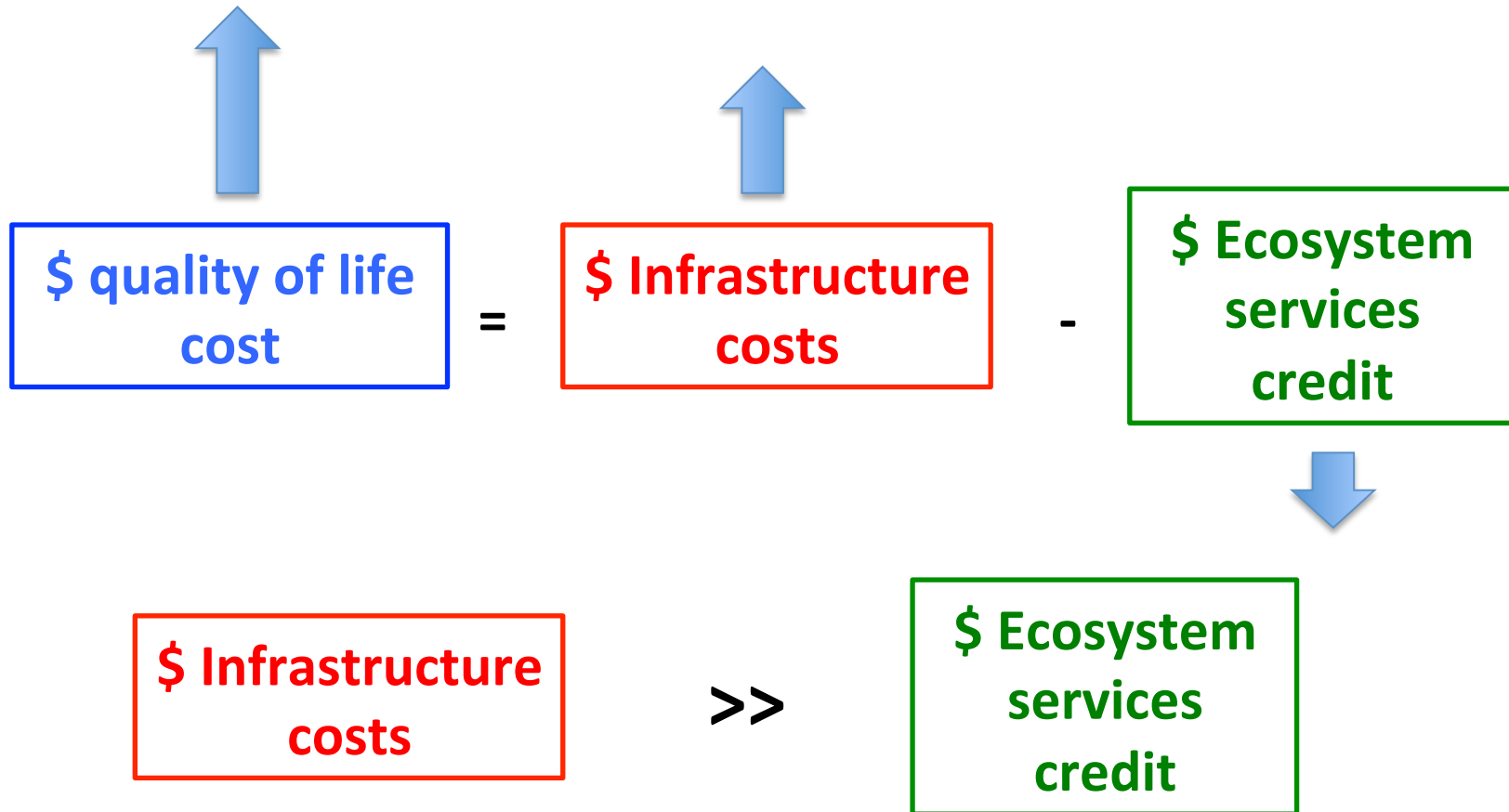
"The overall finding is that the net surpluses generated by growth in the Phase I analysis are insufficient to cover the estimated costs to correct the existing backlog of infrastructure needs."

"The projected cumulative net surplus generated from growth of almost \$700 million represents only about 30 percent of the estimated backlog costs of almost \$2.2 billion"



Costs of Growth

Increased Growth Implies:



Call to Action - Objectives

- To pass a **SUSTAINABLE** financial and environmentally sensitive **Comprehensive Development Plan** in 2019
- To educate decision makers to adopt a forward thinking plan that invests in communities

SMARTER GROWTH ALLIANCE FOR CHARLES COUNTY

OUR VISION

We support a future for Charles County that

- Promotes a vibrant and healthy outdoors
- Protects farms, forests and streams from unbridled development

and where

- Children learn in classrooms, not trailers
- Traffic is not an everyday burden
- Transportation alternatives are created as the heart of Waldorf is revitalized
- All our communities are clean, safe and enjoyable places to live, work and play

OUR MEMBERS

1000 Friends of Maryland
AMP Creeks Council
Audubon MD-DC
Chapman Forest Foundation
Chesapeake Bay Foundation
Clean Water Action
Coalition for Smarter Growth
Conservancy for Charles County
Maryland Bass Nation
Maryland Conservation Council
Maryland Ornithological Society
Maryland Native Plant Society
Mason Springs Conservancy
Mattawoman Watershed Society
Nanjemoy-Potomac
Environmental Coalition
Potomac River Association
Potomac Riverkeeper Network
Sierra Club, Maryland Chapter
Sierra Club, Southern Maryland Group
South Hampton HOA
Southern Maryland Audubon Society

CHARLES COUNTY AT RISK

Charles County has experienced rapid growth in the past two decades, with the population increasing from 101,154 in 1990 to over 150,000 today. This pace, amplified by how and where the county encourages growth, has resulted in the county's being on the bottom rung for key quality-of-life measures.

Among Maryland counties, Charles County has the highest property tax rate, the longest average commute time, the highest percentage of children attending class in trailers and the most forest cut per dwelling unit, all as a result of sprawl development.

SGACC
P.O. Box K
Bryans Road, MD 20616

Anne Arundel County's Future is at Risk



CHESAPEAKE ENVIRONMENTAL PROTECTION ASSOCIATION, INC.
P.O. Box 117, Galesville, Maryland 20765

NEXT STEPS

CITIZEN INVOLVEMENT

- Form a coalition of community action groups
 - Coalition chaired by Growth Action Network



MARYLAND LEAGUE
OF CONSERVATION VOTERS

- Initial members –
 - League of Conservation Voters
 - 1000 Friends of Maryland
 - CEPA



- Plan to meet within 30 days

JOIN YOUR COMMUNITY ORGANIZATION!

IF YOU DON'T HAVE ONE, FORM ONE!



CHESAPEAKE ENVIRONMENTAL PROTECTION ASSOCIATION, INC.
P.O. Box 117, Galesville, Maryland 20765

Thank you,



CHESAPEAKE ENVIRONMENTAL PROTECTION ASSOCIATION, INC.
P.O. Box 117, Galesville, Maryland 20765