

CHESAPEAKE ENVIRONMENTAL PROTECTION ASSOCIATION, INC.
P.O. Box 117, Galesville, Maryland 20765

NEWSLETTER

Fall 2006

PRESIDENT'S MESSAGE

Lee Greenbaum, President 2006



Photo by Rich Romer

August 2006 was a busy month with preparations for the County Executive Candidate Public Forum that was held in Annapolis High School auditorium on 29 August. The work of putting this forum together began months ago, initially with major input from the South River Federation

(SRF), the Severn River Association (SRA), the Chesapeake Environmental Protection Association (CEPA) and the West/Rhode Riverkeeper. The hard work of Kinsey Potter (SRF), Bob Gallagher (West/Rhode Riverkeeper) and Gary Antonides (CEPA) is gratefully acknowledged.

We estimated that there were two to three hundred citizens in attendance and it was our understanding that no one left before the forum ended. One of the reasons that the forum was so successful was because it was moderated by Terence Smith, an unusually talented master of ceremonies. He was unbiased in the referral of questions and in the clarification of ambiguous questions. About sixty percent of the questions were prepared by the participating associations and the balance came from the audience.

Thanks go out to the other associations or groups that were present and they were: the Maryland League of Conservation Voters (Education Office), the Severn Riverkeeper, and the Patuxent Riverkeeper. Without the expert and timely audio help of the Music Department at the high school, the forum would not have been as successful as it was. Our best measures of success were the comments of the candidates when they said that it was "the best of the public forums that they participated in".

CEPA is now in the process of making arrangements for its public meeting which will take place in November after the elections. It will focus on smart growth and the effects of growth on the infrastructure. See below for a more detailed presentation of the public meeting by Rich Romer.

CEPA ENVIRONMENTAL FORUM

URBAN SPRAWL AND THE BAY

Saturday, November 11, 1:00 P.M. to 4:00 P.M.

**South River High School Auditorium
201 Central Avenue (Route 214), just East of Route 2**

By Rich Romer

CEPA will sponsor a forum dealing with the issue of urban sprawl, the consequent spread of impervious surface, the detrimental impact this is having on the health of the Chesapeake Bay, and actions that can be taken to remediate current impacts and minimize future ones.

The Keynote Speaker will be Jason Sartori, President of Integrated Planning Consultants. Sartori is the Statewide Project Manager for Reality Check Plus/Maryland. A committed environmental activist, he holds a MS in Community Planning from the University of Maryland.

U.S. Geological Survey Research Geographer Peter Claggett will use overhead imagery, satellite photography, and GIS data to graphically depict the insidious spread of urban sprawl in our area, the proliferation of impervious surface, and document the detrimental impacts this is having on the health and ecology of the Chesapeake Bay. Claggett holds a Bachelor of Science from the University of California and two Masters of Science from Miami University of Ohio.

They will be followed by Greg Bowen, Calvert County's Director of Planning and Zoning, who will argue that urban sprawl and growth can be controlled if there is the political will to do so. Calvert County has over 30,000 acres of forested and farm land permanently preserved and was recently praised by Audrey Evans, Maryland's Secretary of Planning for having one of the most environmentally friendly Comprehensive Plans in the State. Bowen has a Bachelors Degree in Mathematics from St. Mary's College of Maryland and a Masters Degree in Urban Planning and Policy Management from Johns Hopkins University.

The Forum is being chaired by CEPA Trustee Richard A. Romer. Romer stated that "We are reaching out for attendance not only from CEPA members and those on our mailing list but members of allied organizations such as the West River and South River Federations, the Riverkeeper Alliance, and 1000 Friends of Maryland. Anyone with an

interest in this issue and looking for potential solutions is encouraged to attend.

CEPA President Dr. Leon Greenbaum said "This is the perfect time for a forum dealing with urban sprawl. The 2006 election will have occurred just four days before, and we have the opportunity to present this to an interested and motivated audience. With an understanding of this growing problem, and a set of tools for local governments to deal with it, all that is required is the political will, and this is the ideal time to instill that will in those who have just been elected."

Soft drinks and light refreshments will be available to attendees." There will be no charge to attend the Forum. For more information call Rich Romer at (410)257-6947, or send an email to: rabeat@aol.com

CEPA NEWSLETTER NOW DISTRIBUTED ELECTRONICALLY

Due to the costs associated with distributing the CEPA newsletter by standard mail, we are now distributing it primarily by electronic means. If for any reason, you prefer to continue to get it by mail, just let us know.

The newsletter will be posted on www.cepaonline.org in a .pdf file. Adobe Acrobat Reader will be required to view it. If you don't have this program. It can be downloaded free from www.adobe.com/products/acrobat/readstep.html. We will send an email that the newsletter is available and provide the link so it takes just one click to see it.

To get on our email list or snail mail lists, please let us know your preference by telling us your mailing address and/or email address. To do this, you can:

- (a) Contact Gary Antonides (410-956-6378, garyantonides@comcast.net).
- (b) go to www.cepaonline.org, click [Contact Us](#), and use the email blank that appears, or
- (c) send your request to CEPA, P.O. Box 117, Galesville, MD 20765

CEPA OFFICERS FOR 2007

CEPA's Nomination Committee has nominated the following slate to serve as officers in 2007. CEPA trustees will vote on this slate at the October meeting.

Co-Presidents: Jerry Hill, Gary Antonides
Vice-President: None
Secretary: Lloyd Lewis
Treasurer: Dave Casnoff

As many volunteer organizations have experienced, it is difficult for one person to commit enough time to do all that should be done as the leader of the organization. There are always family, business, and/or travel obligations that must be considered. CEPA has previously used co-presidents and found it beneficial to have greater exposure to the different perspectives.

CEPA is deeply indebted to Lee Greenbaum who served admirably as president in 2005 and 2006, and substantially increased our interaction with other environmental organizations, government agencies, and the public.

BOARD OF TRUSTEES

Lee Greenbaum, President
Gary Antonides, Vice Pres., Newsletter
Lloyd Lewis, Secretary
David Casnoff, Treasurer

Brenda DeLalla
George (Jerry) Hill
Bill Klepczynski
Richard Romer
Bob Gallagher
Anson (Tuck) Hines
Steuart Pittman
Dennis Whigham

RIVERKEEPER'S REPORT

Bob Gallagher, West/Rhode Riverkeeper, Inc.



It was a difficult summer for the West & Rhode Rivers. At the end of June heavy rain and a sewer overflow dumped heavier than usual amounts of

nutrients and bacteria into the rivers. Rising water temperatures and large algal blooms created ideal conditions for more bacteria. A number of people contracted serious infections and one died. In response, we began our first bacteria testing program and hope to expand it next season.

We have had some good news as well. We recently received approval of a grant to begin a shoreline restoration project near Parrish Creek. Thanks to the efforts of volunteer Richard Crenshaw, we have begun a survey of submerged aquatic vegetation and hope to obtain a grant to continue it for several years. In June we learned that our complaints about a private pier built illegally on public land at Franklin Point has resulted in the pier being removed.

Our efforts for improved enforcement and reform of the Critical Area Act are moving forward. We have discussed the issues with both candidates for Anne Arundel County Executive and with several members of the General Assembly. Over the summer we participated with the Chesapeake Bay Foundation and other groups to stop a resort development next to the Blackwater National Wildlife Refuge. In response to those efforts, the Critical Area Commission recently denied an approval critical to the development.

The winners of several of the up coming election contests will make decisions that have huge consequences for the environment and our quality of life. Please learn about where the candidates stand on the issues and **VOTE!** Several non-partisan environmental organizations endorse candidates based on their environmental records. They include: Maryland League of Conservation Voters; Sierra Club, Maryland Chapter, Anne Arundel Group; and the Blue Crab Project. Each group has an easy-to-find website.

See you on the river, Bob Gallagher

Cell Phone: 410-533-9002
E-mail: riverkeeper@comcast.net
Website: www.westrhoderiverkeeper.org

COUNTY EXECUTIVE CANDIDATES' ENVIRONMENTAL FORUM

By Gary Antonides

More than 200 people attended the County Executive Candidates' forum on environmental issues at the Annapolis High School during the evening of August 29. All of the candidates for that office participated. The Democratic candidates were Dennis Callahan and George Johnson. The Republican candidates were Tom Angelis, Phil Bissett, Dave Boschert, John Leopold, and Greg Nourse. West/Rhode Riverkeeper Bob Gallagher started the meeting with introductions and by thanking the sponsors: the Severn River Association and Severn Riverkeeper, the South River Federation and South Riverkeeper, the West/Rhode Riverkeeper, the Patuxent Riverkeeper, the Chesapeake Environmental Protection Association, and the Maryland League of Conservation Voters (Education Fund). He then introduced Terence Smith, a noted broadcaster and journalist who moderated the event.

Since then the primaries have narrowed the field to George Johnson (D), and John Leopold (R), so only their comments are discussed here. Each candidate gave an opening statement, in which Leopold expressed his belief that the County can grow and protect the environment at the same time. Johnson noted that he has worked for AA County for 35 years, 12 years as County Sheriff.

Each sponsoring organization asked one question of all the candidates. Lloyd Lewis from CEPA was the first, and asked if they supported a dedicated fund for stormwater runoff systems. Johnson does, but Leopold would restructure the County government to free up some funds to address stormwater runoff.

Drew Koslow, the South Riverkeeper, referred to a recent University of Maryland study that concluded that AA County's enforcement of Critical Area Laws was poor, and stated that 77% of the waivers requested were approved. The report also said fines for violations were minimal and enforcement happens only in response to citizen complaints – not County inspections. Drew asked how the candidates would improve this record. Johnson would hire more inspectors and impose fines as presently delineated. Leopold would allow no more retroactive waivers and revise critical area laws.

Jen Brock asked if the candidates supported a constitutional amendment requiring the General Assembly to approve any sale of the County's park lands or conservation lands. Both Johnson and Leopold support it.

Fred Kelly, the Severn Riverkeeper, asked what the candidates would do to ensure that we will be able to swim in our rivers and the bay in the future. Johnson referred to his support of a dedicated fund for stormwater control. Leopold will use creative financing to do whatever is required to clean up the water.

Bob Gallagher, the West/Rhode Riverkeeper, asked if the candidates would reveal anyone who contributed more than \$200. to their campaign. Both candidates said yes.

Mike Stein said the public learns about County issues too late to influence the result, and asked how the candidates would get the word out to us in a timely manner. Johnson would keep the public informed, and send County reps to

community meetings. Leopold would set up a 311 number to talk to County officials.

Irene Hantman referred to the substantial growth that is projected for AA County over the next 20 years and asked how the candidates would deal with it while preserving the quality of life. Leopold says we need a good general development plan that involves revitalizing older areas. Johnson says developing the Ft. Meade area is an opportunity to do it right, and would follow the SAPs as much as possible.

Sam Shropshire asked the candidates what they would do about the terrible traffic on Forest Drive, which is caused by the city annexing territory and building too many homes. Johnson would work with the city to control growth.

Sally Horner says the current administration acknowledges that new residential homes do not pay enough taxes for services under the tax cap, so they depend on commercial development to carry the cost. If we are successful in limiting commercial development, she wondered where the County would get the money that would come from that development. Leopold would use creative financing and would trim government. Johnson would reprioritize.

Mike Lofton was concerned that a stormwater fund would not be supported by those not living on the water. He wants better access to the water for AA County residents, so he won't have to be reincarnated as a dog so he can go to the dog park at Quiet Waters to get access. Johnson believes people not on the water will support the stormwater fund. Leopold is concerned about NIMBY attitudes as well as BANANA (build absolutely nothing anywhere near anybody).

Joan Bell asked if the candidates would support the SAPs. Leopold says public input is important, but the plans must be compatible with each other.

Bob Whitcomb said there are 9 sites slated for dredging in the coming year, and asked the candidates if they thought that was sufficient. Johnson would dredge as many sites as possible. Leopold says he has gotten state money for waterways in the past and would pursue it as County Executive.

CEPA BOARD OF TRUSTEES BRIEFED ON SUSQUEHANNA RIVER DAMS



Photo by Rich Romer

Jean Kapusnick from the Army Corps of Engineers, Baltimore Office, spoke to the CEPA Trustees on May 23 about the build up of sediment behind dams on the Susquehanna River and its implications for the Chesapeake Bay. She referenced two US Geological Survey reports and one Chesapeake Bay Program report that

indicated that the two upper Susquehanna River reservoirs have exceeded their sediment carrying capacity, and in less than 10 years, the Conowingo will exceed its sediment

carrying capacity. Annual sediment loads to the Chesapeake will increase by three to five times current loads, and flooding and scouring will be very damaging. Detailed studies of remedies have been proposed, but even the studies (much less the remedies) have not been funded. Federal and state agencies continue to monitor the sediment build up, but no actions are contemplated. It was pointed out that the dams have been keeping the sediment from entering the bay for all these years, and when the dams can hold no more, the amount of sediment will be no more that if the dams had not been there in the first place.

EPA EMPHASIZING NEW STANDARDS RATHER THAN MORE STUDIES

Rich Batiuk from the Annapolis Office of the EPA, who works on the scientific aspects of the Bay, spoke to CEPA at the September Trustees meeting. He reports that the EPA is



Photo by Rich Romer

now in a period of transition because they feel that they have enough science to develop a program to actually clean up the bay. Instead of doing more research, they are establishing standards and techniques using existing technology. This includes, among other things, new dissolved oxygen standards that are tailored to different

parts of the Bay instead of one standard for the whole Bay. It also involves new nitrogen and phosphate limits on all of the sewage treatment plants, and deadlines for meeting the limits. These goals were agreed to by the six states in the Bay watershed, and it seemed that EPA was in a position to enforce them. It wasn't clear that the funding for this will be available, or that the EPA will actually enforce these goals.

CEPA MAY MONITOR PST LANDFILL IN HARWOOD

Mike Lofton, President of the Harwood Civic Association asked CEPA to apply for a grant from the County for the funds in a Community Benefit Fund associated with the



Photo by Rich Romer

closed PST Landfill in Harwood. The fund was established to ameliorate any negative effects the landfill might have in the community surrounding the landfill and was a condition imposed when the landfill was approved. There is concern about toxic material leaching into the

groundwater because this was the last landfill that was not required to have a liner. The grant would be for the purpose

of monitoring ground water in the vicinity of the landfill. The present owner, Waste Management, Inc. is required to monitor the groundwater for at least five years, so the grant may initially be used to evaluate the adequacy of the monitoring and checking the results and conclusions of WMI's monitoring. CEPA's Trustees felt that it would be appropriate for CEPA to get involved, but had questions regarding the liability involved, and details of the relationship CEPA would have with the County and WMI. CEPA has informed the County by letter that we are interested in such a grant and wish to meet with them to discuss what the terms and conditions would be.

PROFILE OF A TRUSTEE

LLOYD F. LEWIS, Ph.D.
CBF's BaySaver of the Year, 2006.

Lloyd has been heavily involved in environmental issues and has worked with numerous volunteer organizations for many years. His knowledge and experience has benefited CEPA since he became a Trustee in 1999.



Photo by Rich Romer

His formal education was in Engineering Physics at U.C. Berkeley (B.S.), Physical Oceanography at MIT (M.S.), and Ocean Engineering at U. of Rhode Is. (Ph.D.) He worked for the federal Government, including Department of Energy for 30 years, and also spent 10 years with industry as Oceanographer/Ocean Engineer, before retiring in 1995.

He has received many awards for his volunteer activities, including:

- Anne Arundel County Volunteer of the Year, 1996
- Maryland's "Most Beautiful People" Governor's Citation, 1996
- Anne Arundel County Utilities Citizen Volunteer of the Year, 1987
- Chesapeake Bay Foundation Oyster Restoration Volunteer of the Year, 2004
- Chesapeake Bay Foundation Maryland Bay Saver of the Year, 2006

The last award was recently reported in the Annapolis Capital (9/13/06), and recognizes his contributions to the CBF oyster restoration program. The captain of the CBF oyster restoration vessel *Patricia Campbell* says that he is an invaluable part of the oyster program, and has learned nearly all aspects of operating the vessel. Lloyd especially enjoys this work since it is outside, and many of his other interests, such as gardening and crabbing, are also outside activities.

He has served on the following Anne Arundel County Advisory Committees:

- Edgewater/Mayo Water and Wastewater (Chair)
- Mayo Wastewater Reclamation Subsystem (Chair)
- Beverly-Triton Beach Park Management Plan

In addition to serving as a Trustee (currently as Secretary) of CEPA, he also works with the South River Federation and

the Chesapeake Bay Foundation on Oyster Replenishment, and is active in planning the Patuxent Greenways.

He is a member of the Southern Maryland Chapter, National Audubon Society; Maryland Ornithological Society; Anne Arundel Bird Club; Association of Field Ornithologists; Nature Conservancy; National Resources Defense Fund; and the National Wildlife Federation.

In addition to his environmental interests, he has served in many other community service positions:

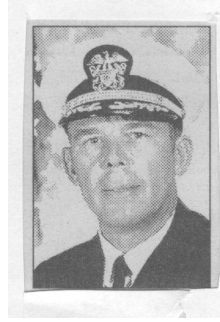
- Friends of Arundel Seniors (currently President)
- Commodore Mayo Kiwanis (Chairman of Community Services)
- Marine Technology Society - Anne Arundel County Science Fair Judge
- Mayo Peninsula Action Council
- South County Community Garden (Manager)

He resides in Cloverlea on the Rhode River and somehow has time to be a part-time waterman (Commercial Crabber), and to get involved in sailboat racing.

OBITUARY

Commander Bruce Allen Bauer, 75, a resident of Deale for 15 years and a CEPA Trustee in the nineties, died of kidney failure during cancer treatment on July 16 at the Anne

Arundel Medical Center. He was born in Washington, DC in 1931. He earned a BA in English literature and journalism from the University of North Carolina, and MS in international affairs from George Washington University, as well as learning Malay at the Army Language School. He was in the Navy for 27 years, serving on four ships, including the destroyer *USS Stribling* as Commanding Officer. He was an Assistant Naval Attache in Djakarta, in the Office of the Joint Chiefs of Staff at the Pentagon, an intelligence officer in Italy and Guam, and CO of the Chesapeake Bay Division of the Naval Research Lab in Chesapeake Beach.



After retiring from the Navy, he was a navigation instructor at the Masters, Mates, and Pilots School in Linthicum, and was Captain of the Navy's Monob (Mobile Noise Barge) Research Ship in Cape Canaveral. He held Coast Guard licenses for Master and Chief Mate. He was the author of *The Sextant Handbook*, 1986, and wrote for *Cruising World Magazine* and *Bay Weekly*. He was a consulting editor for the Naval Institute Press in Annapolis.

His interests included sailing, boat restoring, and woodworking. He is survived by his wife, Nancy, two daughters, a sister and twin granddaughters. A private naval burial was held at sea.

2007 CEPA MEMBERSHIP AND/OR RIVERKEEPER CONTRIBUTION

If you would like to support CEPA or the West/Rhode Riverkeeper, please use the form below. Donations to both are tax deductible. A CEPA membership for 2007 is \$20., and entitles you to our newsletters, and to vote for our Trustees.

Mail to: CEPA
PO Box 117
Galesville, MD 20765

Name _____

Address _____

Phone _____ (Optional)

Email _____ (Optional)

Occupation _____ (Optional)

Enclosed is: [] \$20. for my CEPA membership.

(Or other amount: \$_____)

[] \$_____ Contribution to the
West/Rhode Riverkeeper.



CEPA
P.O. Box 117
Galesville, MD 20765

