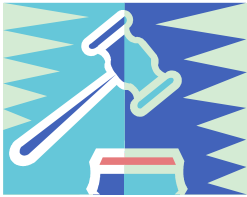


**CHESAPEAKE ENVIRONMENTAL PROTECTION ASSOCIATION, INC.**  
P.O. Box 117, Galesville, Maryland 20765

## NEWSLETTER

### **PRESIDENT'S MESSAGE**



Over the years CEPA's focus has been, and it continues to be, on issues relating to the health of the Chesapeake Bay, including issues related to the health of citizens living in towns and communities bordering the Bay. One of CEPA's most recent endeavors involved several years of research related to water resources, including the adequacy of our aquifers to supply drinking water to thousands of Maryland citizens. A preliminary report outlining growing concerns has been submitted to Governor Ehrlich by an appointed Advisory Committee with hopes that the Governor will take appropriate action. CEPA will continue to monitor the Governor's actions regarding water resources.

CEPA's Outreach Committee, headed by Jerry Hill, has reviewed recent activities of CEPA with an eye to expanding CEPA's involvement in issues that will help to restore the Bay to being a more viable waterway and an expanded and healthier food resource. In addition to being involved in specific or activist projects, it will expand its education program and develop a closer affiliation with other community associations who are also dedicated to improving the quality of the Bay and its tributaries.

Recently, many Bay area citizens have followed the lead of the Hudson River activists who initiated the Riverkeeper program and were a viable force in taking actions where the state and municipalities neglected to take action against polluters. Initially, these dedicated people donated their time and expertise, but as their commitment grew, funds were found to expand it into a professional entity. A number of the Chesapeake's rivers now have Riverkeepers, the newest being Bob Gallagher, who has recently been approved as the West/Rhode Riverkeeper. CEPA will work with Bob, providing whatever help possible.

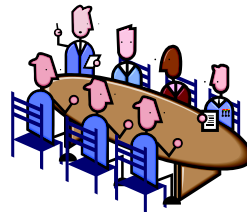
In closing, I would like to express for the CEPA Board of Trustees its deep appreciation to Gary Antonides, the outgoing President, for his visionary

direction of the Board and his sincere concern about environmental pollution and how it affects the ecosystem of the Chesapeake Bay.

Lee Greenbaum, President, 2005

### **BOARD OF TRUSTEES**

Lee Greenbaum, President  
Gary Antonides, Vice Pres., Newsletter  
Lloyd Lewis, Secretary  
David Casnoff, Treasurer



Brenda DeLalla  
George (Jerry) Hill  
Anson (Tuck) Hines  
Bill Klepczynski  
Steuart Pittman  
Sonny Tucker  
Dennis Whigham

### **RIVERKEEPER**

CEPA has supported the concept of waterkeepers for the past several years, and is happy to see that the Rhode and West Rivers now have a riverkeeper. Bob Gallagher, from Shady Side has been approved by the Waterkeepers Alliance. This is an international organization that sets standards and provides expertise and other support for local Waterkeeper programs. The activities of these programs are financed entirely from fund raising by the local programs. At present, there are 12 Waterkeepers in the Chesapeake Bay watershed. In addition to the West/Rhode Riverkeeper. They include Riverkeepers for the Potomac, Patapsco, Upper Susquehanna, Severn, South, Anacostia, Patuxent, Chester and James Rivers and the Assateague Coastkeeper as well as the VA Eastern Shorekeeper.

Bob is a retiring attorney and is willing to serve as a Waterkeeper at the same time that efforts are being made to establish a funding plan for the effort. This is in obvious contrast to experience of the South River Federation, who resolved to establish their riverkeeper more than two years before they were actually able to do it. They had to develop the

organization with respect to its membership, financial resources, and talents. With much hard work and dedication, they did so, and hired Drew Koslow as Riverkeeper, who was immediately recognized and respected as a major player on the South River. The West and Rhode Rivers are indeed fortunate to have the visibility of an existing effort while raising funds, rather than trying to raise money for something that will happen at some future date.

CEPA is committed to help in fundraising for this valuable service. If you would like to contribute to the West/Rhode Riverkeeper effort, you can send a check to CEPA, PO Box 117, Galesville, MD 20765 with a notation that it is for the Riverkeeper, or mail it directly to Bob Gallagher, 1456 E. West Shady Side Road, Shady Side, MD 20764.

### RIVERKEEPER'S REPORT

Bob Gallagher, West/Rhode Riverkeeper



Our proposal to establish a Riverkeeper program for the West and Rhode Rivers was approved by the Waterkeeper Alliance on March 8, 2005. The process required a lot of work. The support and encouragement of CEPA was very helpful. Now the real work begins.

This past week, we took our first actions under the Riverkeeper banner. We joined the Natural Resources Defense Council in supporting Maryland clean air legislation and joined the South Riverkeeper to oppose revision of Anne Arundel subdivision regulations that would reduce erosion protection of steep slopes. We hope to begin our regular patrols of the West and Rhode Rivers early in May.

The mission of the West/Rhode Riverkeeper is to monitor, protect and enhance the water quality of the West and Rhode Rivers. The riverkeeper programs around the country and around the Chesapeake approach their mission in a variety of ways. In addition to trying to identify and stop sources of pollution, other riverkeeper programs are involved in water quality monitoring, environmental education, shoreline and habitat restoration and participation in regulatory and legislative activities. The approach we take should reflect the views of the residents of the watershed and the users of the Rivers. We plan to meet with as many people and groups, such as CEPA, as we can to listen to their views and priorities for protecting the Rivers. To some extent our priorities will be dictated by the opportunities that present themselves and by the preferences of people who are willing to support

our efforts through volunteering their time and through contributions.

Whatever activities we undertake, our success will be determined by the support we receive from volunteers and contributors. As we develop our priorities we will ask for your support through this newsletter and by other means. In the meantime, if you have identified specific pollution issues, if you have views on setting our priorities or if there are specific activities for which you would like to volunteer, please contact me by telephone (310-261-5021) or e-mail ([riverkeeper@comcast.net](mailto:riverkeeper@comcast.net)).

### WATER RESOURCES



CEPA is concerned about our aquifers being depleted over a period of over 30 years, and the fact that no government agency is managing the use of our water resources. Even though the aquifers cover more than one county, and sometimes more than one state, there is little coordination between the jurisdictions. In 2001, CEPA drafted a proposal to establish a statewide Water Resources Commission to make recommendations regarding the management of our water resources. After a bill to establish such a commission passed unanimously in both houses in 2003, Governor Ehrlich vetoed it and appointed the commission himself.

The Commission appointed by Ehrlich has recently published their recommendations for management of our water resources. The Commission's area of interest is all of Maryland, but time did not allow them to do a thorough job in the entire state, and they recommended that the Commission's term be extended. They did make some specific recommendations for the "Coastal Plain" area which surrounds the Bay, and which is served primarily by seven aquifers:

- Data showing the depletion of aquifers in South County must be supplemented with data from other areas.
- All the aquifers must be studied together since water migrates between the aquifers.
- The number of monitoring wells should be increased by 70%.
- A comprehensive computer model of the aquifers should be developed.
- State support to local governments for State mandated water and sewer plans should be restored.

CEPA is encouraging legislators to reestablish the Commission and to enact it's recommendations.

## MARYLAND'S TRIBUTARY TEAMS



Maryland's DNR is coordinating the efforts of ten "Tributary Teams," one for each of the ten watershed areas of the Bay. Since all of the state is in one watershed or another, these teams

cover the entire state. Each team consists of representatives from citizen's groups, the business community, environmental groups, farmers, and federal, state, and county governments. Each team meets regularly to help implement pollution control measures in its watershed. Since a good portion of the Bay's pollutants, including fertilizers, sediment, and toxins, start out on land and are carried into the Bay by our streams, creeks, and rivers, the idea is to control the pollution as far upstream as possible.

The ten Tributary Teams are: Upper, Middle and Lower Potomac, Patuxent, Upper and Lower Western Shore, Patapsco, Upper and Lower Eastern Shore, and Choptank. We are in the Lower Western Shore, which includes the watersheds of the Magothy, Severn, South, West and Rhode Rivers, as well as the area to the south that drains directly into the Bay down to the mouth of the Patuxent River. This area includes highly developed areas, farmlands, forests, and wetlands. This variety results in many types of pollution.

Some of the Tributary Teams concern themselves with defining the extent of the pollution, devising practical solutions, and trying to get business interests, government, or others to institute whatever measures need to be taken. The Lower Western Shore Team does all that, but it also takes a more hands-on approach, often cooperating with other organizations to actually monitor water quality, plant grass or trees, plant oysters, conduct wade-ins, etc. Recent accomplishments include:

- Initiated the Green Building and Energy Efficiency Executive Order. This requires the state to use more clean energy (wind, solar, etc.) and use energy efficient design in state buildings.
- Sponsored wade-ins in several places each of the last few years. These were conducted in the Magothy, Severn, and South Rivers and Herrington Harbor.
- With Annapolis High School, planted native plants along the South River, and grew and planted more than 2,000 trees.
- Held agriculture tour for elected officials and county representatives to show what farmers in Calvert and Anne Arundel County have done to implement Best Management Practices.

- With CBF, held canoe tour in the Severn to see positive impacts of Critical Area Laws.
- The team seeds a restored oyster bed in Herring Bay with the Herring Bay Clean Water Initiative.

Each year DNR sponsors an Annual Tributary Team Meeting which includes all the teams and anyone else that would like to attend. Results of the teams' efforts and future plans are presented. The next (9<sup>th</sup>) Annual Tributary Team Meeting will be on April 16, 2005, from 9:00 AM to 5:00 PM at the Maryland Department of the Environment, Montgomery Park Building in Baltimore. The theme of the meeting is "Approaching 2010." Recall that the Chesapeake Bay Plan issued in 2000 included a number of goals for 2010, some of which appear to be next to impossible now that we are at the halfway point. For more information and a registration form for the meeting, go to [www.dnr.state.md.us/bay/tribstrat/annual\\_meeting](http://www.dnr.state.md.us/bay/tribstrat/annual_meeting). More information about all of the teams is available at [www.dnr.state.md.us/bay/tribstrat/](http://www.dnr.state.md.us/bay/tribstrat/).

## OYSTERS



CEPA has taken a strong interest in restoring the oyster population of the Chesapeake Bay. We join many in the scientific community in our concern over the possible introduction of non-native oyster species to replace our much depleted native oyster stock. As with any alien species introduction, we are concerned about the possible introduction of disease that could impact our native oyster or other Bay shellfish.

Locally, there is coming together a partnership of native oyster restoration collaborators from the Smithsonian Environmental Research Center, Chesapeake Bay Foundation (CBF), South River Federation (SRF), Bay watermen, citizen volunteers, and community associations. The goal of this new group is to plant disease resistant native oysters on a number of leased bottom sites in the Rhode, South and West Rivers. The plan would be for these sites to be monitored for several years to study oyster diseases, growth rates, reproduction, and survival. The group is currently seeking resources to build on and expand native oyster restoration work begun in the past few years by SRF in the South River and both the West River Improvement Association and the Shady Side Peninsula Association in the West River. Both projects are working closely with CBF's native oyster restoration program.

**CEPA'S OUTREACH PROGRAM**



At the beginning of 2005, the CEPA Board of Trustees prepared a plan for the activities and objectives of the organization for the coming year. The plan is the result of a review of our resources, our strengths, and our objectives as an organization. This involved some introspection into where we have been effective in the past and how we can change to be a more effective organization. Our operating plan for 2005 has us dedicating more of our energies to fostering public awareness and encouraging public activism on issues affecting the

health and recovery of the Chesapeake Bay and our local environment. We recognize that in order to be effective in these goals we need to improve relationships and lines of communication with the many groups and associations in the bay region with concerns about the local environment and preserving our quality of life. CEPA's outreach efforts will help us to establish these relationships. We will be visiting local environmental groups and organizations to introduce ourselves, talk briefly about CEPA, and learn about the organizations visited. We are currently contacting groups to request visits. If we do not contact your group or organization and you would like to learn about CEPA, please contact Jerry Hill at [jhill@jjma.com](mailto:jhill@jjma.com).

**CEPA PUBLIC MEETING**

***April 26, 2005, 7:30 PM  
Edgewater Police Station***

**Quantitative Relationship Between Development and Quality of the Bay.  
Dr. Dennis Whigham, SERC**

We know that agriculture and development and paving over our existing open land impact our environment, but we know little about how much of any activity it takes to result in a response in the shallow sub-estuaries of Chesapeake Bay. SERC, with funding from EPA, has performed an investigation which demonstrates the linkages between human activities on the land and indicators of estuarine health. The results of the study potentially provide planners with information that can be used to make better management decisions. Dennis Whigham is one of the lead investigators and will present the results of the study.

**Citizen Enforcement of our Nation's Laws Relating to Clean Water  
Ed Merrifield, Potomac Riverkeeper**

Ed Merrifield will explain why citizen enforcement of existing laws is sometimes necessary as a last resort, and how the Potomac Riverkeeper has used the Clean Water Act and other environmental laws to help clean up the Potomac River and its tributaries.

**CEPA MEMBERSHIP / RIVERKEEPER CONTRIBUTION**

If you would like to support CEPA's efforts, or support the new West/Rhode Riverkeeper, please use the form below. Donations to both are tax deductible. A CEPA membership for 2005 is \$20., and entitles you to our newsletters, and to vote for our Trustees. Mail to: CEPA  
PO Box 117  
Galesville, MD 20765.



Name \_\_\_\_\_  
Address \_\_\_\_\_  
\_\_\_\_\_  
Phone \_\_\_\_\_ (Optional)  
Email \_\_\_\_\_ (Optional)  
Occupation \_\_\_\_\_ (Optional)

- Enclosed is:  \$20. for my CEPA membership. (Or other amount: \$ \_\_\_\_\_)  
 \$ \_\_\_\_\_ Contribution to the West/Rhode Riverkeeper